



THE MOUNTAIN

ASTROLOGER

Wyrð Arts & Culture Magazine

Frequency: 4 quarterly issues

Cover Prices: \$15.99



Our Readers

... are practitioners, students, & astrology enthusiasts of all ages who read *TMA* cover to cover; they consider *TMA* an essential resource, keeping their copies and using them as reference materials for years. There are no other English-language astrology magazines in print with the history, editorial quality, depth, and wide newsstand distribution of *TMA*.

Readership: 30k

Social Media: 55k

A Cosmic "PEAK" Through Time

From obscure folk mythologies to timing techniques and other tools for navigating modern life, each issue of *TMA* offers our readers a tantalizing selection of articles to savor and share.

Passionate about people and planets — our publication has been in print since 1987. Now producing four volumes per year, the pages of *TMA* are dedicated to exploring the ancient and evolving art of astrology. Accessible to both professional astrologers and those interested in growing their repertoire.

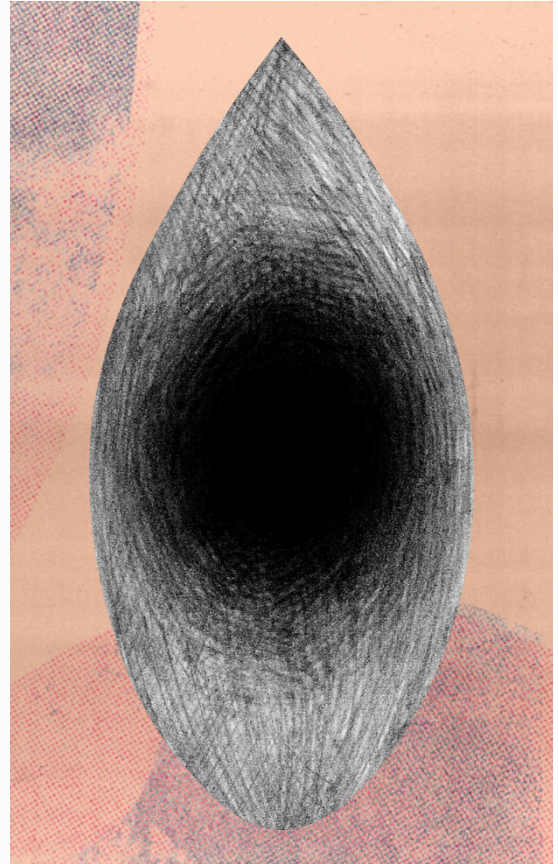
Wyrd Arts & Culture

“So in simplest terms, what is the Web of Wyrd? It is the fabric of the universe. It is the threads, the cosmic strings, the links that connect us all to everything...

The Wyrd is the thread and the thread is the Wyrd. Wyrd is fate, the future, but also the past, the things that you have lived through and achieved. It is ever present. It has depth (Orlog) and where it crosses with other threads, you will find meetings with people, events and things that have the power to change the course of your life forever...

The Web of Wyrd is what we make of it, and in turn, our actions within it are what make us who we are and what we will become.”

— Earl S. Wynn



Capricorn Sol: Dec - Feb

1st Qrtly digital release: Nov 1

On Sale in Stores: Dec 1

Reservation deadline: Aug 15

Ad copy due: Sept 1

Aries Nox: March - May

2nd Qrtly digital release: Feb 1

On Sale in Stores: Mar 1

Reservation deadline: Nov 15

Ad copy due: Dec 1

Cancer Sol: June - Aug

3rd Qrtly digital release: May 1

On Sale in Stores: June 1

Reservation deadline: Feb 15

Ad copy due: March 1

Libra Nox: Sept - Nov

4th Qrtly digital release: Aug 1

On Sale in Stores: Sep 1

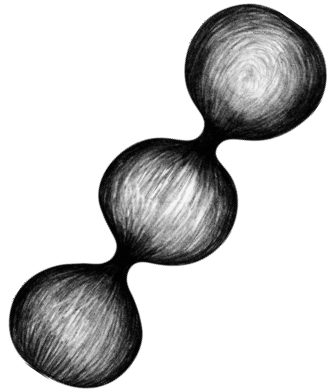
Reservation deadline: May 15

Ad copy due: June 1

Publishing Schedule

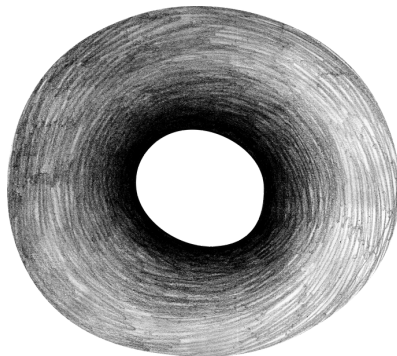


The Mountain Astrologer Advertising



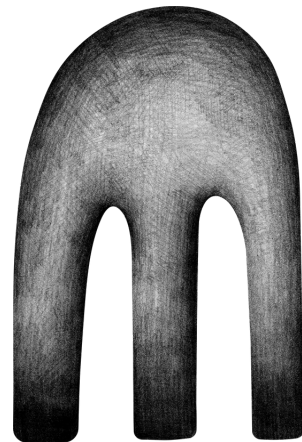
Jupiter Plan

4 consecutive ads of
the same size.

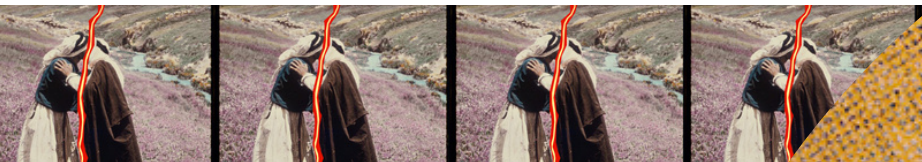


Venus Plan

2 ads of the same size
in 1 year.



Print Advertising Rates



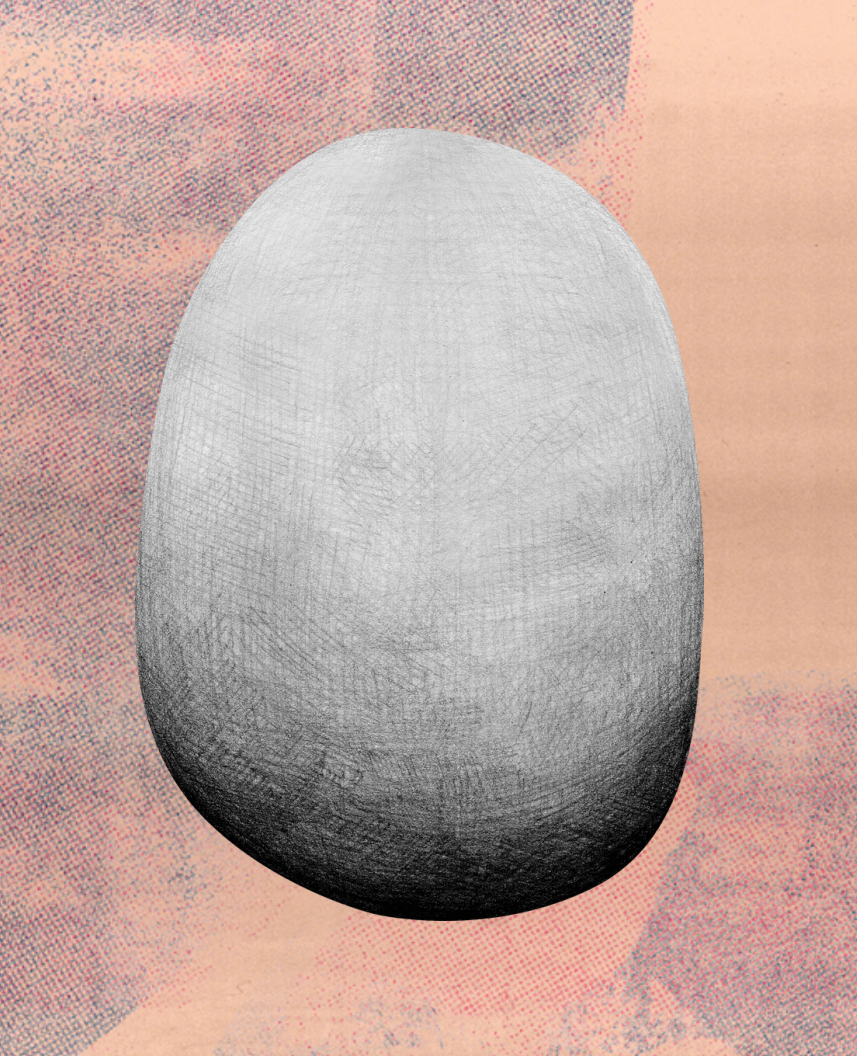
Back Cover	\$4,000
Inside Covers	\$3,500
Full Page	\$2,500
1/2 Page	\$1,500
1/4 Page	\$850
Square PD	\$250

**Astrological industry discounts
available!**

Single Ad - 35% -All issues

Venus Plan- 45% - All issues

Jupiter Plan - 55% - All issues



Production Details & Dimensions

- All color
- Trim size: 8-1/4 x 10-3/4 inches
- Binding: saddle stitch (quarterly)
Paper: 80# gloss (qrtly cover) &
- 40# matte (qrtly body)

Ad Size	Dimensions
Full Page	7.25" w x 9.5" t
1/2 Page (T)	3.5" w x 9.5" t
1/2 Page (W)	7.25" w x 4.75" t
1/4 Page (T)	3.5" w x 4.75" t
PD (SQ)	2" w x 2" t

***When
reserving
space, you
must indicate
configuration:
wide (W),
tall (T), or
square (SQ).***

Contact

The Mountain Astrologer Magazine is published by the woman-owned company Egregore, Inc. and operated by an inclusive team of professional astrologers, publishers, editors, writers, advertisers and designers.

Rae Sapp

Publisher & CEO

rae@mountainastrologer.com

Alyssa Beltran

Public Relations Director

alyssa@mountainastrologer.com

Ad Reservations & Billing

ads@mountainastrologer.com

Advertising Terms & Conditions

Meeting our specifications is essential for advertising in TMA. If you do not have the services of a professional graphic designer, we can refer you to a designer whose work meets our needs. TMA accepts ads only in electronic/ digital format. Your ad must be built with the exact dimensions of the TMA ad size you have reserved. Acceptable digital file types: print quality (or press quality) PDF files, highest quality JPEG or JPG files, TIFF files with all fonts 100% embedded resolution of 300 dot per-inch (dpi) minimum (72-dpi or 96-dpi web-ready graphics are NOT acceptable for use as print ads). Note: Digital files that do not conform to the above specifications (due to incorrect size, unembedded fonts, etc.) may incur file-fix charges at \$50 per hour (1-hour minimum charge).

TMA's PROFESSIONAL DIRECTORY (PD)

The Professional Directory provides affordable advertising space in each issue for practicing astrologers.

CONDITIONS

We reserve the right to refuse your ad if it is, in our judgment, unsuitable for any reason or if it does not meet our specifications or deadlines. If we do refuse to run the ad, payment will be refunded in full. NO REFUNDS if you reserve space and then cancel after the ad reservation deadline. Ads will be pulled from publication when payment deadlines are not met. Egregore, Inc. DBA The Mountain Astrologer is not liable for any costs or damages. Advertisers assume all liability for all claims or judgments arising from the publication of their ads. Rates, schedules, and print quantities are subject to change without notice. Check our website for updates. For more information, contact ads@mountainastrologer.com.

Contracts must be signed and returned to TMA by the reservation deadline to be included in the magazine.